

# English Teaching College 2019

**“Perfect English preparation for study or employment”**

**Hello, I'm John Brunsdon, MA. Dip. Teaching Director of ETC.**



We have been preparing students for academic studies, and employment since 1993. After studying at ETC many of our students have successfully completed their academic studies in business, computing, science, and other subjects at New Zealand and Australian universities. Our current roll is 250 fulltime students from 45 different countries on our 3 campuses.

*We offer the following courses for international students:*

## **English for Academic Study**

This programme is suitable for students wanting to improve their English in order to pass academic English Tests like IELTS, CAE or FCE. The programme is divided into 10 sections allowing students to move from Elementary to Advanced levels. Students are placed in the level that best matches their ability and goals.

Our tutors are experts in helping students get the highest possible scores in international English tests.

## **New Zealand Certificate in English Language**

This full-time twenty week course is designed for students wanting to study at a New Zealand university or polytechnic without having to sit the IELTS test. Six different levels covering reading, writing, speaking and listening, from Foundation to Advanced English.

Level 3 Academic is equivalent to IELTS 5.5.

Level 4 Academic is equivalent to IELTS level 6.

## **High School Holiday Programme**

Full time study during the Christmas holidays of January and February. Other times by arrangement.

## **English for Health Professionals**

This full-time course is designed for medical professionals (especially nurses), who want to improve their English before taking the OET exam. Study English for Academic Study in the morning and afternoon and pay an extra \$150 for 3 hours of private OET study per week.

## **Special Interest Programmes**

We will design and deliver programmes for special interests such as aviation and cooking.

## **IELTS Pre-Testing Centre**

ETC is one of a selected number of IELTS pre-testing centres. Students are able to trial IELTS questions under exam conditions before they are included in IELTS tests.

## **OET Occupational English Test**

The OET English test is accepted by the Council of Nursing in New Zealand, and by other professional organisations like the Dental Registration Board.

## **Demi Pair**

Study English in the morning, 15 hours and help with child care activities in the afternoon, evening or weekends for 15 hours per week.

## **Cambridge English - First Certificate and Cambridge Advanced Exam**

## **TOEIC Testing in Wellington**

We are an approved centre for teaching and testing TOEIC.

## **Private English Classes**

Planned to meet your requirements, the classes include only one or two students. Classes can include recreational activities.

## **ETC Quality**

ETC is registered with the New Zealand Government and accredited by the New Zealand Qualifications Authority (NZQA) With over 20 years' experience and over 250 fulltime enrolments a year, we are recognised as one of New Zealand leading language schools.

## **Younger students**

- ETC is accredited by the New Zealand Government to enrol students aged 14 years and over
- For students under 18 years with no parental support we are required to arrange extra supervision. The fee is NZ\$50 per week

## **Student support**

- We will arrange your accommodation
- We will meet you at the airport
- We will help arrange visas and bank accounts
- We provide assistance in joining sports and cultural clubs
- We provide academic counselling

## **Course fees**

Please contact us on [office@etc.ac.nz](mailto:office@etc.ac.nz) or visit our web site, [www.etc.ac.nz](http://www.etc.ac.nz)

## **Flexible Course Starting Dates & Hours**

- You can usually start any Monday during the year
- You can select the number of weeks you study
- Study hours 9am to 3pm Monday to Friday
- School activities are usually included in the school fees. A small fee may be charged for additional trips or activities. These are optional.

## **Accommodation**

We can arrange your homestay accommodation. You will stay in a family home and have your own room. Three meals a day are provided.

## **Insurance**

Insurance is compulsory for travel, health and personal belongings. ETC can arrange insurance. Students have the option of purchasing their own insurance but must provide evidence of approved insurance cover before travelling to New Zealand.

e.g.

1 month	6 months	12 months
NZ\$70	NZ\$316	NZ\$633

(Southern Cross Healthcare 2019 price)

### Palmerston North Campus

140 The Square,  
PO Box 995  
Palmerston North  
New Zealand



E-mail: [office@etc.ac.nz](mailto:office@etc.ac.nz)  
[www.etc.ac.nz](http://www.etc.ac.nz)  
Phone: +64 6 357 7107  
Fax: +64 6 358 0800

- Beginners to advanced levels ✓
- Academic/IELTS study ✓
- High School Programme ✓
- Farmstay ✓
- Students aged 14+ ✓

### Palmerston North Campus

The ETC campus is in the centre of the city, overlooking a city park, very near the Public Library. Shops, cafes and restaurants from different cultures, as well as the world's popular fast food outlets, are within the city centre. UCOL is close by and Massey University is 5 km away.

The campus is in a spacious building catering for 150 students in 14 fully equipped classrooms. The large student lounge has kitchen facilities so students can make hot drinks and prepare meals. Drinks such as tea and coffee are free. Students have free access to the Internet, self-study computers, the campus library and a pool table.

The airport is 6km from the school.

Local buses are free for international students.



### Palmerston North City

Palmerston North, with a population of 80,000, is called New Zealand's "Student City" because it has many educational facilities, including UCOL and Massey University. The town is home to 11,000 students from around New Zealand and all over the world. Excellent accommodation is available for international students. Early on Saturday mornings you can visit fresh fruit and vegetable markets. There are beaches on the coast a half-hour's drive from Palmerston North. Adventure trips within a three hours' drive can take you to ski fields and active volcanic parklands with geysers, boiling mud pools, and hot springs for spa treatments. There is also white water rafting, trout fishing, swimming and bungee jumping. Within three hours' drive you can also sample New Zealand's award winning wines on tours of local vineyards.



### Wellington Campus

204 Willis Street, Te Aro,  
PO Box 9787  
Wellington  
New Zealand



E-mail: [office@etc.ac.nz](mailto:office@etc.ac.nz)  
[www.etc.ac.nz](http://www.etc.ac.nz)  
Phone: +64 4 385 0066  
Fax: +64 4 385 4050

- Beginners to advanced levels ✓
- TOEIC/Cambridge preparation ✓
- Internship ✓
- Activities ✓
- Students aged 14+ ✓

### Wellington Campus

The ETC campus is in a modern building catering for 100 students in 8 fully equipped classrooms. Students have free access to the Internet, self-study computers and a pool table. There is a student kitchen, where students can prepare hot meals. Drinks such as tea and coffee are free.

The Wellington Campus is in the central business district of Wellington, 1km from Massey University's Wellington campus and Victoria University. Wellington International Airport is 10 km away.



### Wellington City

The capital of New Zealand, Wellington is a mix of traditional and modern styles. It is very fashionable. Victoria and Massey Universities are in Wellington.

From the hills of Wellington you can see beautiful sunset views over the sea. You can go with friends to many coastal beaches, including one that has a seal colony. There are many activities such as snorkel and scuba diving, motor boating and sailing to be involved in. You can go rock climbing, or visit the National Museum of New Zealand, Te Papa. World famous WETA Workshop is also found here.

Boat cruises and other tours give you the opportunity to visit many parts of Wellington. From Wellington you can travel by boat to the South Island to see beautiful mountains, lakes and sub-tropical native forests. A four hours' drive will take you to ski fields, trout fishing and volcanic areas.



### Lower Hutt Campus

Level 3 MacKay House, 92  
Queen's Drive  
Lower Hutt  
New Zealand



Opened in 2015

***Excellent IELTS Results***

<b><i>Mira Knoche</i></b>	<b><i>9.0 Speaking</i></b>
<b><i>Richard Dongon</i></b>	<b><i>9.0 Reading</i></b>
<b><i>Celine Yuan</i></b>	<b><i>9.0 Listening/Reading</i></b>
<b><i>Karen Gucor</i></b>	<b><i>9.0 Listening/Reading</i></b>
<b><i>Markus Hermanns</i></b>	<b><i>8.5 Listening/Reading</i></b>
<b><i>Ali Al-Baghdadi</i></b>	<b><i>8.5 Listening/Reading</i></b>
<b><i>Jian Xu</i></b>	<b><i>8.5 Overall</i></b>
<b><i>Kaori Fumoto</i></b>	<b><i>8.5 Listening</i></b>
<b><i>Hoang Xuan Vui</i></b>	<b><i>8.5 Listening</i></b>
<b><i>Fumiko Aikawa</i></b>	<b><i>8.5 Reading</i></b>
<b><i>Maria Kladnitskaya</i></b>	<b><i>8.5 Speaking</i></b>
<b><i>Stefanie Ulrike Leippert</i></b>	<b><i>8.0 Overall</i></b>
<b><i>Bacha Zhang</i></b>	<b><i>8.0 Listening</i></b>

Ahmed Abdul Rahman A Yankissar from Saudi Arabia

*"Thanks to the great teaching methods and teachers in this college, I achieved a high level of English. ETC has offered me the opportunity to meet students of many nationalities and I have made many friends and have enjoyed spending my time with them, not to mention all the trips and events ETC has organized for us. It was an absolutely wonderful experience. I am really glad that I had the chance to study English at ETC. Thank you!"*

Catherine Elizabeth Lucie Bricot from France

*"I would recommend ETC to my friends because the English classes are of good quality, teachers are very professional and helpful with students. Also the all staff at ETC are available to help students with any enquiries."*

Feng Qian from China

*"The course was exciting and informative. Not only did I improve my English, I learnt about life in New Zealand. After ETC I went to UCOL and studied Graphic Design and Animation for one year. I am now working in Palmerston North, New Zealand as a graphic designer.*

*I am very happy to recommend ETC to serious students who want to improve their academic English."*

Yuka Yamaguchi from Japan

*"I am very happy to recommend ETC to serious students who want to improve their Academic English."*



**Code:** English Teaching College has agreed to observe and be bound by the Code of Practice for the Pastoral Care of International Students published by the Minister of Education. Copies of the Code are available on request from this institution or from the New Zealand Ministry of Education website at <http://www.minedu.govt.nz>

**Immigration:** Full details of visa and permit requirements, advice on rights to employment in New Zealand while studying and reporting requirements are available through the New Zealand Immigration Service, and can be viewed on their website at <http://www.immigration.govt.nz>

**Eligibility for Health Services:** Most students are not entitled to publicly funded health services while in New Zealand. If you receive medical treatment during your visit, you may be liable for the full cost of that treatment. Full details on entitlements to publicly funded health services are available through the Ministry of Health, and can be viewed on their website at <http://www.moh.govt.nz>

ETC is registered and approved by NZQA as a category 2 provider confident in education performance and confident in capability in self-assessment.

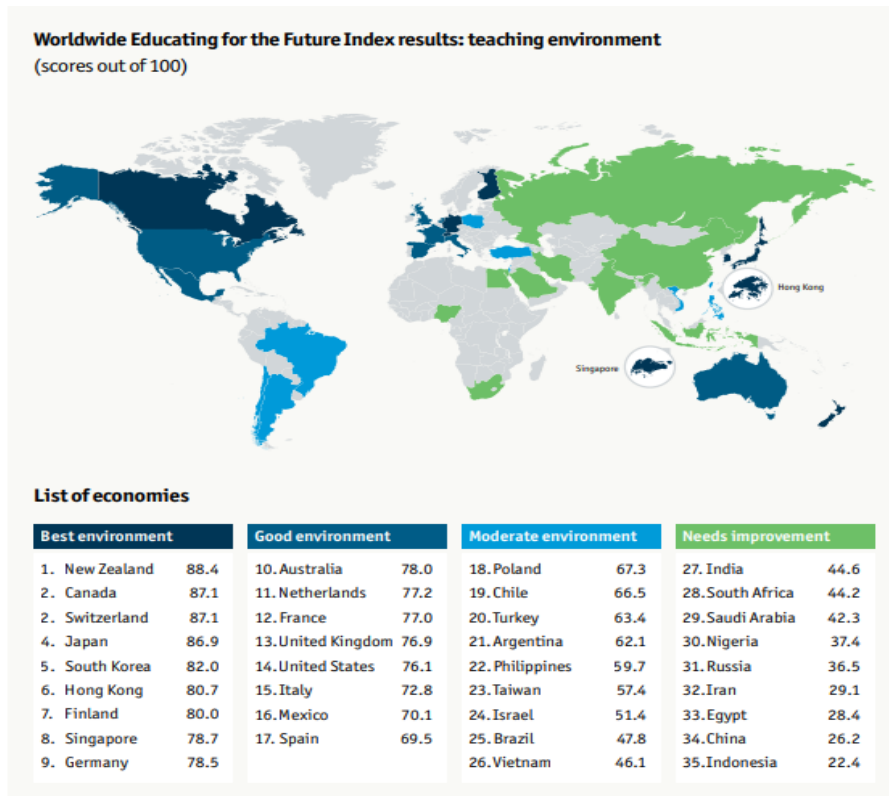
English Teaching College is the trading name for Education & Training Consultants New Zealand Ltd.  
Head office P.O. Box 995 Palmerston North, New Zealand [www.etc.ac.nz](http://www.etc.ac.nz)

Copyright © 2018 English Teaching College (ETC), All rights reserved.

# Why Come to New Zealand?

## *New Zealand World Leading Education*

*New Zealand came first in the Worldwide ranking of 35 countries preparing 15 to 24 year olds for the Future. It has the best teaching environment in the world according to a report prepared by The Economist, Intelligence Unit in 2017.*



## *NZ ranked first for social progress*

*New Zealand is the most socially advanced country in the world.*

*Harvard economist Professor Michael Porter, has put New Zealand first out of 130 countries based on 54 indicators of social progress.*

*The country tops the world on indicators of personal rights and freedoms, and comes in the top four for water and sanitation, access to schooling and tertiary education, and tolerance and inclusion of minority groups.*

**The New Zealand Herald** Thursday April 3, 2014

## **World Leading Education:**

*"New Zealand is a top-performing country (for) the quality of its educational system", noted the OECD's 2011 Better Life report. It also described us as "one of the strongest OECD countries" for literacy, maths and science.*

*OECD's 2011 Better Life report*

*New Zealand leads the world for education, according to the UN Development Programme's 2011 Human Development Report.*